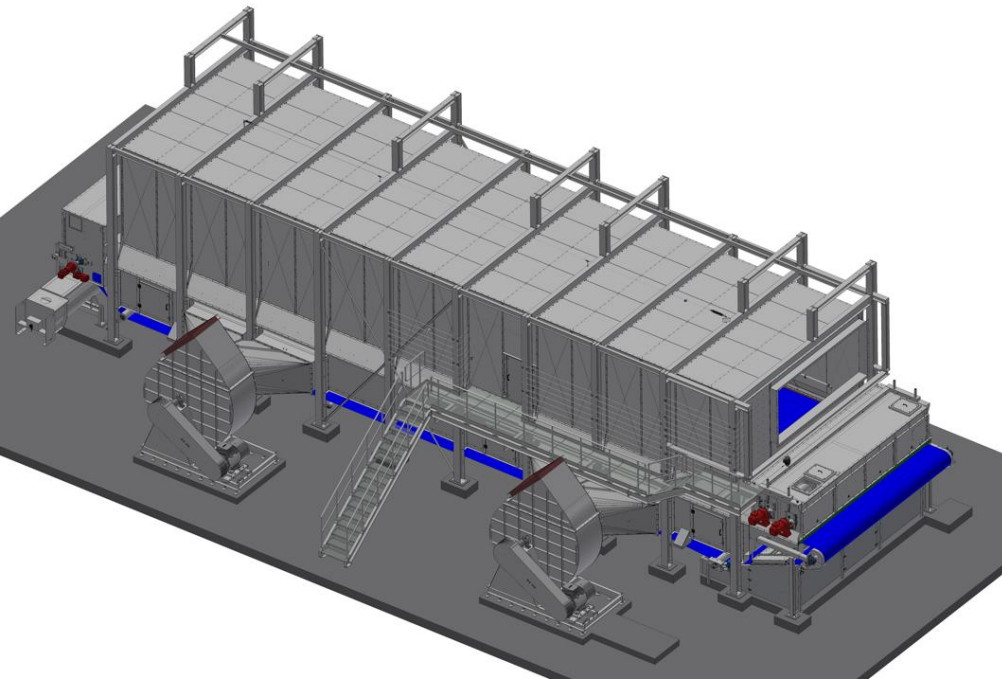


Ożarów, Poland

Low Temperature KUVO Belt Dryer - Pre Dryer - municipal RDF



Plant Capacity*:	Wet RDF (Moisture Content = 35 % _{wet base})	19.6 t/h
	Dry RDF (Moisture Content = 15 % _{wet base})	15.0 t/h
	Water evaporation	4.6 t/h
Footprint (LxW):	appr. 26.4 m x 11.7 m (dryer excluding peripherals)	
Drying Surface:	129 m ²	
Heat Sources*:	Hot Air from clinker cooler	83'000 Nm ³ @ T= 220 °C
Elec. power installed:	approx. 212 kWel	
Year of Order:	2023 Q4 (start up planned in 2025 Q4)	
Special features:	<ul style="list-style-type: none"> - Drying temperature of 90°C after mixing of ambient air - High efficiency mixing of ambient and hot air - Minimized number of flaps - Operation of the dryer in different modes: exhaust to clinker cooler fan, exhaust to stack and hybrid - Design of the dryer and peripheral equipment (hot air mixing, dryer bypass, control of dew point) by Swiss Combi - Discharge screw compliant ATEX22 inside - Benefits: cement kiln can accept high moisture RDF from municipality, increased TSR (Thermal Substitution Rate) 	

*: max values

